


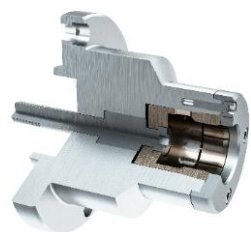
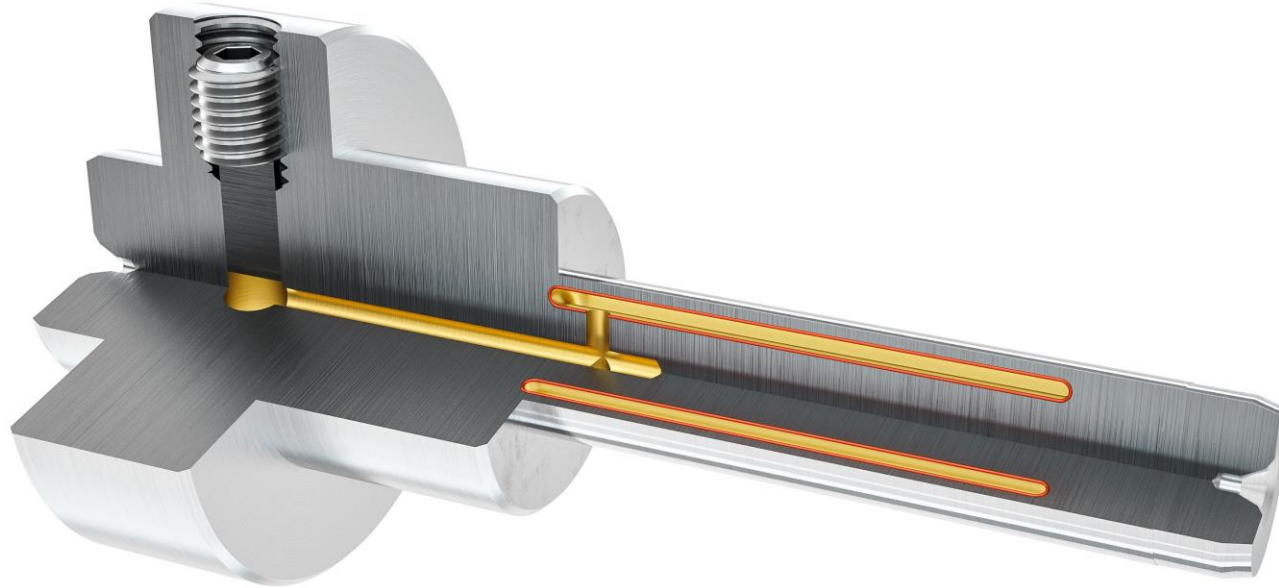


Product Portfolio

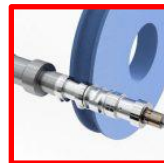
Products	Product Types	Clamping-range	Product Features	Clamping Options	Machine-connections	Methods of clamping
	Hydraulic Expansion Arbor	6 - 500 mm	Very high concentricity and repeat accuracy of ≤ 0.003 mm ($\leq 0.00012''$) / Excellent wear resistance / Insensitive to dirt	Changeable parts such as: back stops, slotted collets, splined slotted collets	All standard DIN/ISO machine interfaces, between centers, flange mounted, special customer interfaces, quick change interfaces, special interfaces to existing adaptations of competitors tools	Manually by hand and automatically actuation – axially / radially / tangentially - with allen key / Power-clamping "Push" / Power-clamping "Pull" / Direct hydraulic injection / Permanently via spring package "push to release" / Power-clamping "Tailstock"
	Hydraulic Machine Spindle					
	Hydraulic Hobbing Arbor					
	Hydraulic Tool Holder					
	Hydraulic Expansion Chuck	5 - 500 mm	Very high concentricity and repeat accuracy of ≤ 0.003 mm ($\leq 0.00012''$) / Excellent wear resistance / Insensitive to dirt	multiple (different) clamping areas possible Electronic Pressure Control		
	Hydraulic Machine Spindle					
	Hydraulic Tool Holder					
Hydraulic Quick Change Chuck	20 - 150 mm	+ pull down effect	Integrated Pressure Transmitter Oil- / Air through lines			
	HYDRA-Mechanical Clamping Arbor	12 - 500 mm	high concentricity and repeat accuracy of ≤ 0.005 mm ($\leq 0.0002''$) / High rigidity due to plane tightening of the workpiece / Large loading and insertion clearance / Excellent wear resistance	Changeable parts such as: back stops, slotted clamping collets, splined slotted clamping collets		
	HYDRA-Mechanical Clamping Chuck	8 - 400 mm				
	Friction Taper	10 - 150 mm			Low interfering contour / Hydraulic ejector	Changeable centers
	Mechanical Clamping Arbor	12 - 500 mm	high concentricity and repeat accuracy of ≤ 0.005 mm ($\leq 0.0002''$) / High rigidity due to plane tightening of the workpiece / Large loading and insertion clearance / Excellent wear resistance	Changeable parts such as: back stops, slotted clamping collets, splined slotted clamping collets		
	Mechanical Clamping Chuck	8 - 400 mm				
	Friction Taper	10 - 150 mm	Low interfering contour	Changeable centers		
	Mechanical Quick Change System	---	permanently clamped	Automatable		
	Face Driver	---	Low interfering contour	Changeable inserts		

Hydraulic Expansion Arbor

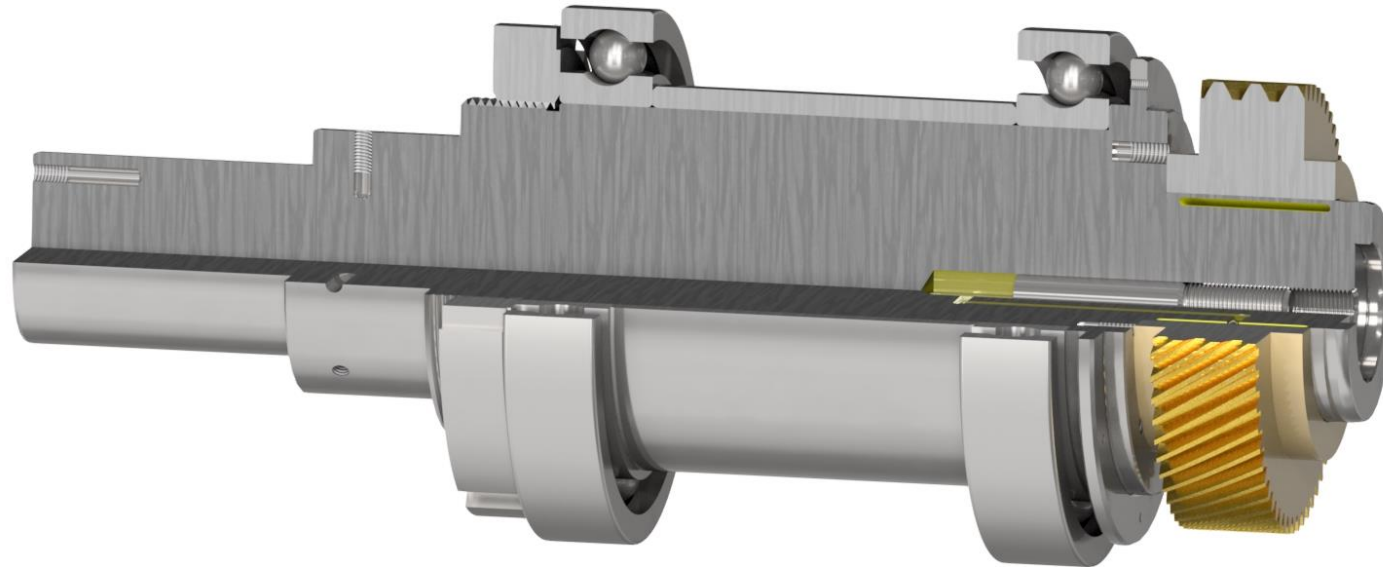


- Very high concentricity and repeat accuracy of $\leq 0,003$ mm (0,00012")
- Excellent wear resistance
- Uniform expansion of the entire clamping range
- Insensitive to dirt

APPLICATION EXAMPLES:



Hydraulic Machine Spindle

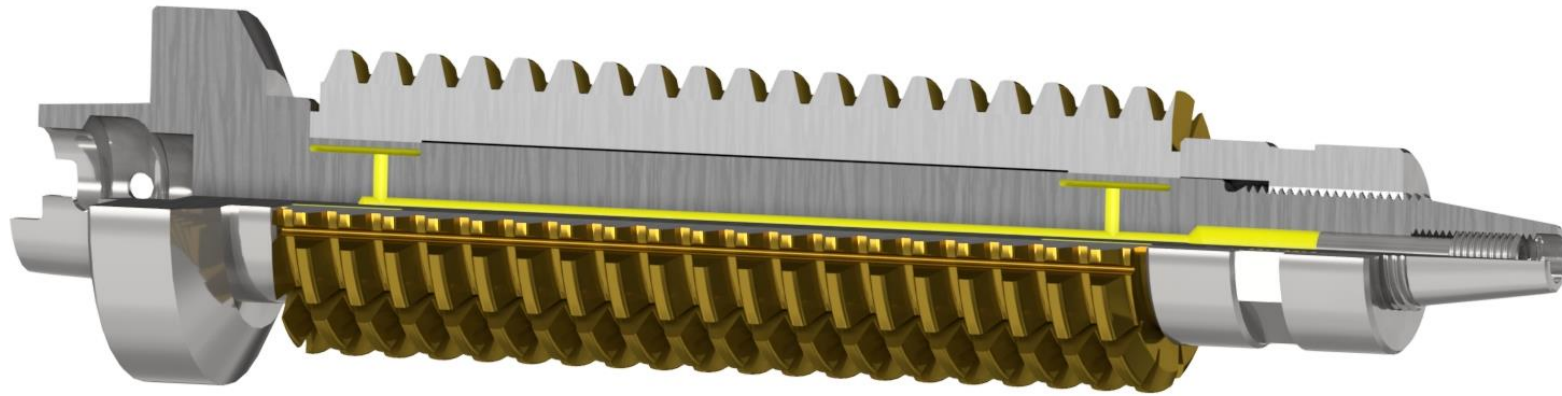


- Very high concentricity and repeat accuracy of $\leq 0,002$ mm (0,00008")
- Uniform expansion of the entire clamping range
- Vibration-reducing
- Insensitive to dirt

APPLICATION EXAMPLES:



Hydraulic Hobbing Arbor

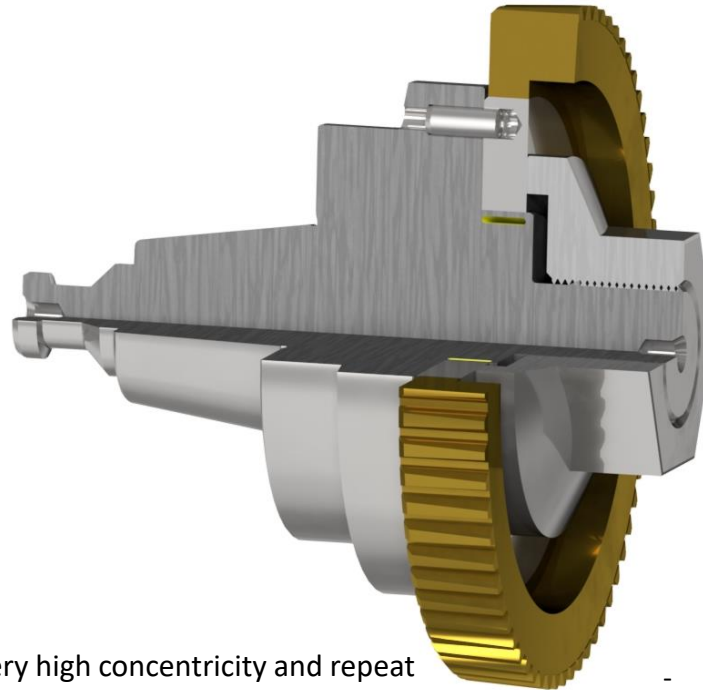


- Very high concentricity and repeat accuracy of $\leq 0,003$ mm (0,00012")
- Uniform expansion of the entire clamping range
- Vibration-reducing
- Insensitive to dirt

APPLICATION EXAMPLES:



Hydraulic Tool Holder



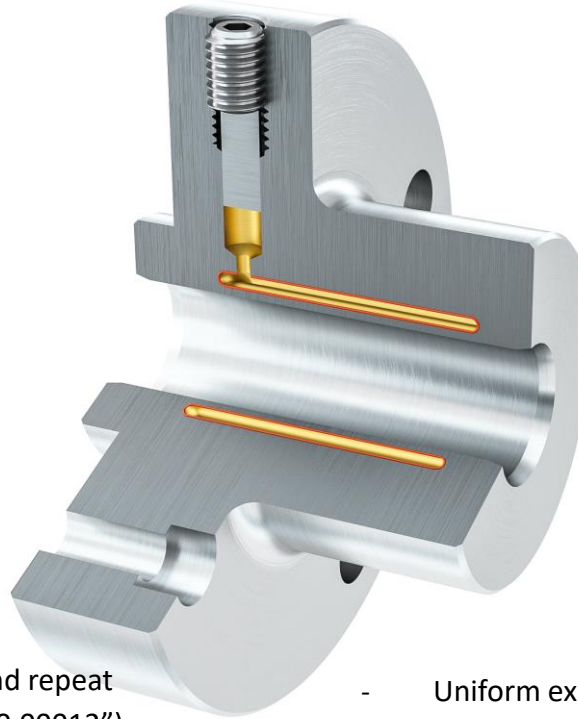
- Very high concentricity and repeat accuracy of $\leq 0,002$ mm (0,00008")
- Uniform expansion of the entire clamping range
- Vibration-reducing
- Insensitive to dirt

APPLICATION EXAMPLES:



HYDRA-EXPANSION CHUCK

Hydraulic Expansion Chuck



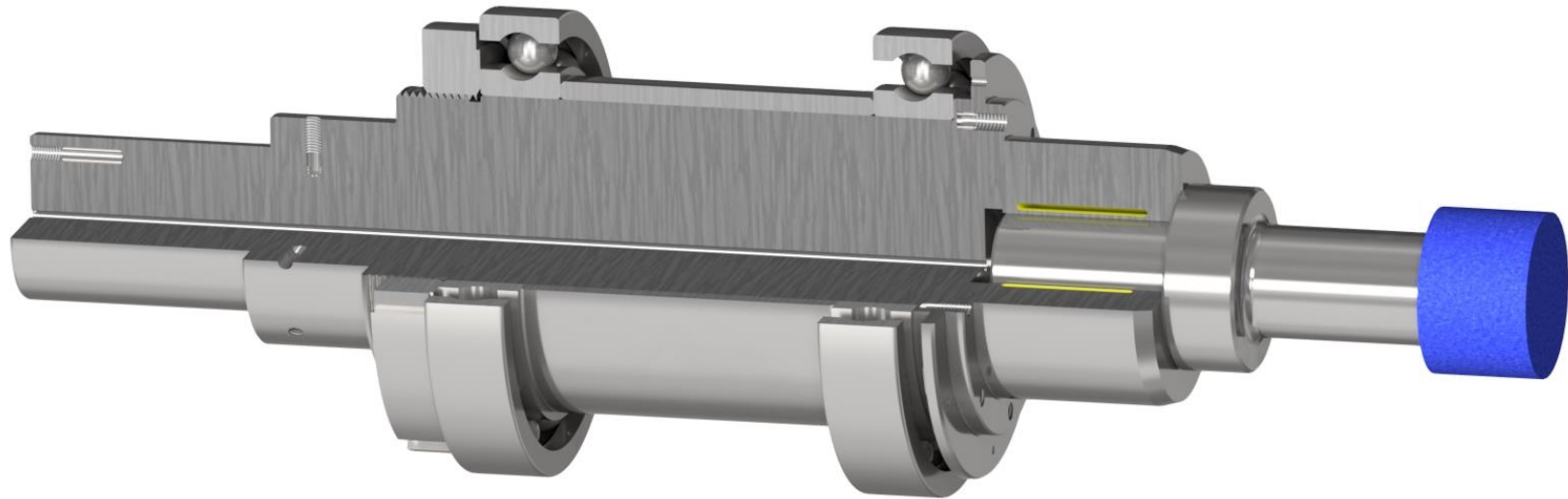
- Very high concentricity and repeat accuracy of $\leq 0,003$ mm (0,00012")
- Excellent wear resistance
- Uniform expansion of the entire clamping range
- Insensitive to dirt

APPLICATION EXAMPLES:



HYDRA-EXPANSION CHUCK

Hydraulic Machine Spindle

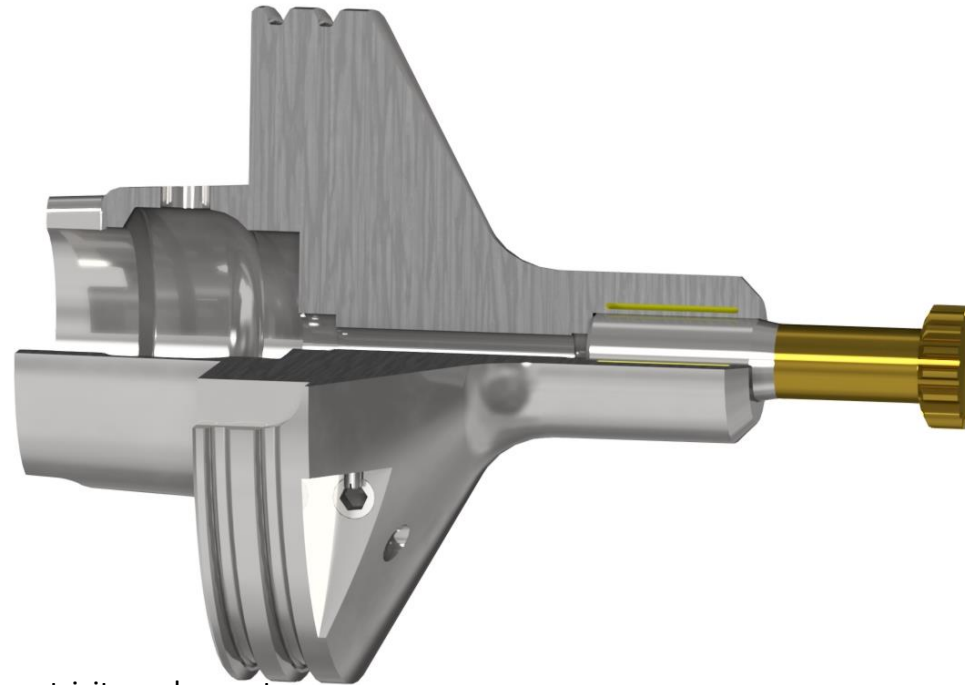


- Very high concentricity and repeat accuracy of $\leq 0,002$ mm (0,00008")
- Uniform expansion of the entire clamping range
- Vibration-reducing
- Insensitive to dirt

APPLICATION EXAMPLES:



Hydraulic Tool Holder



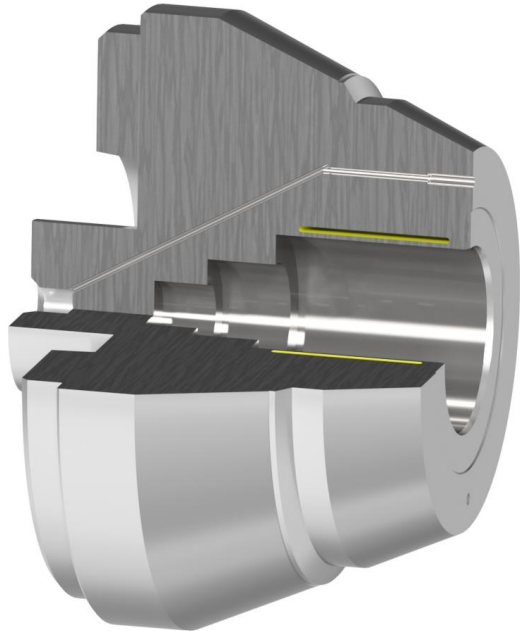
- Very high concentricity and repeat accuracy of $\leq 0,002$ mm (0,00008")
- Vibration-reducing
- Uniform expansion of the entire clamping range
- Insensitive to dirt

APPLICATION EXAMPLES:

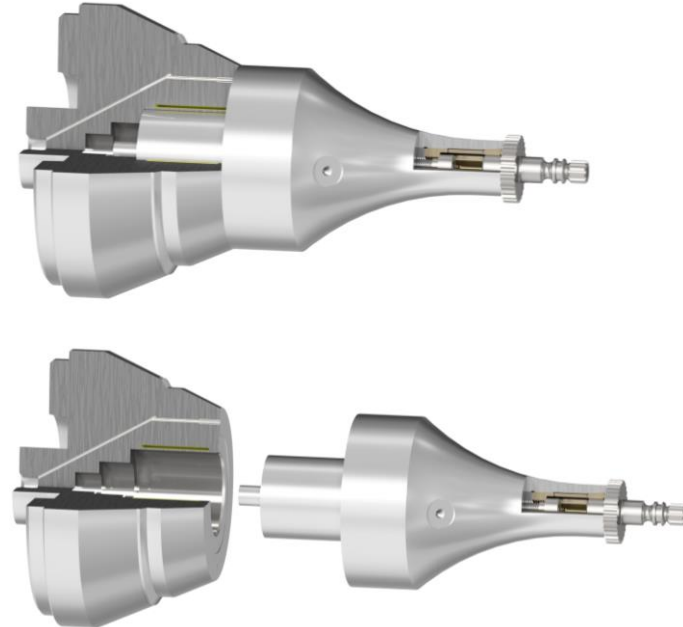


HYDRA-EXPANSION CHUCK

Hydraulic Quick Change Chuck



- Very high concentricity and repeat accuracy of $\leq 0,003$ mm (0,00012")
- Pull down effect

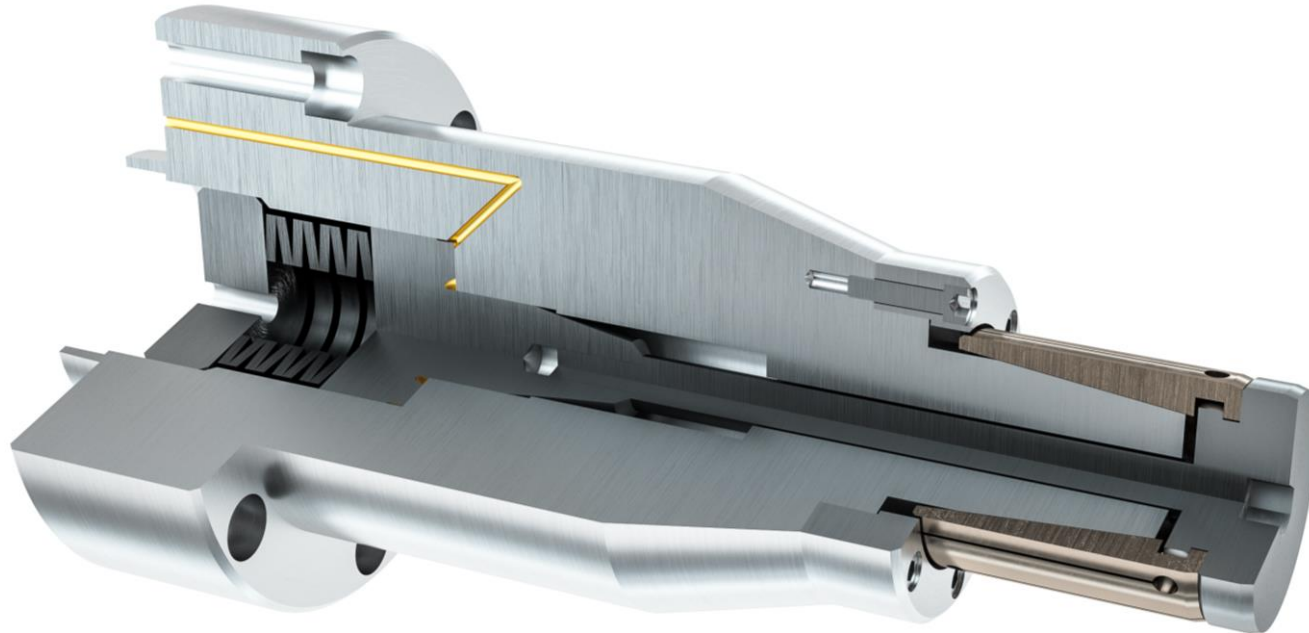


- Uniform expansion of the entire clamping range
- Insensitive to dirt

APPLICATION EXAMPLES:



HYDRA-Mechanical Clamping Arbor – PERMAN SYSTEM[®]

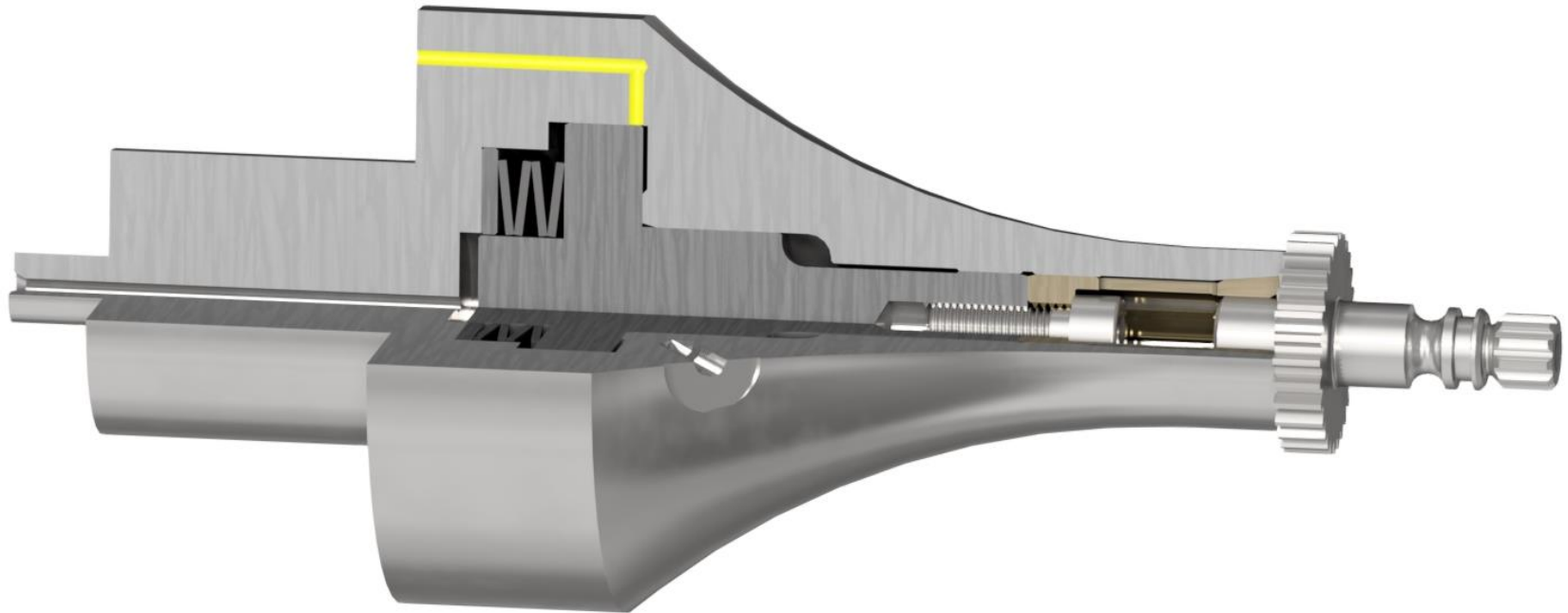


- High concentricity and repeat accuracy of $\leq 0,005$ mm (0,0002")
- Excellent wear resistance
- High rigidity due to plane tightening of the workpiece
- Large loading clearance

APPLICATION EXAMPLES:



HYDRA-Mechanical Clamping Chuck – PERMAN SYSTEM[®]



- High concentricity and repeat accuracy of $\leq 0,005$ mm (0,0002")
- Excellent wear resistance
- High rigidity due to plane tightening of the workpiece
- Large loading clearance

APPLICATION EXAMPLES:



“Friction Taper” – with hydraulic ejector

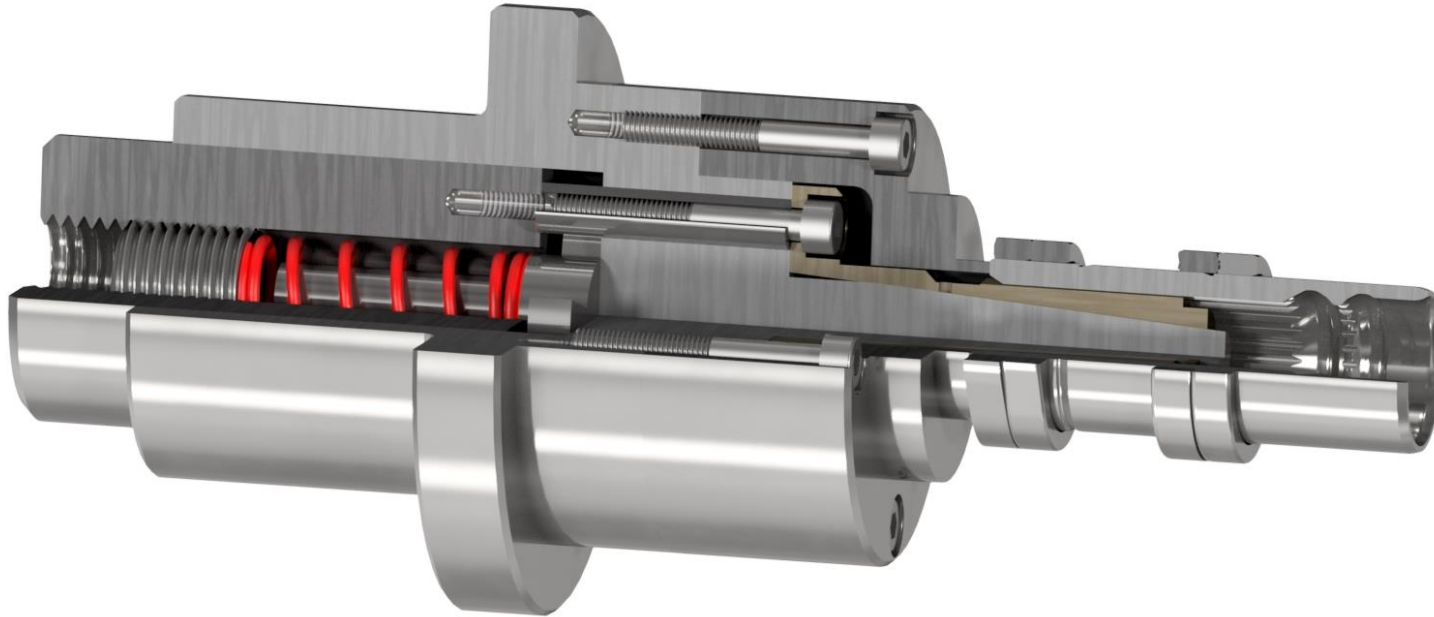


- Very high concentricity and repeat accuracy of $\leq 0,003$ mm (0,00012")
- Excellent wear resistance
- Loading assistance through hydraulic ejector
- Low profile body

APPLICATION EXAMPLES:



Mechanical Clamping Abor – PERMAN SYSTEM[®]

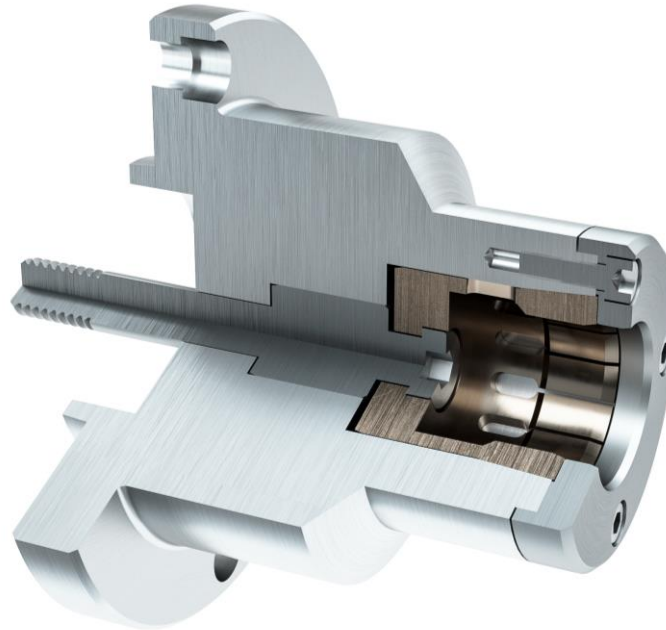


- High concentricity and repeat accuracy of $\leq 0,005$ mm (0,0002")
- Excellent wear resistance
- High rigidity due to plane tightening of the workpiece
- Large loading clearance

APPLICATION EXAMPLES:



Mechanical Clamping Chuck – PERMAN SYSTEM[®]

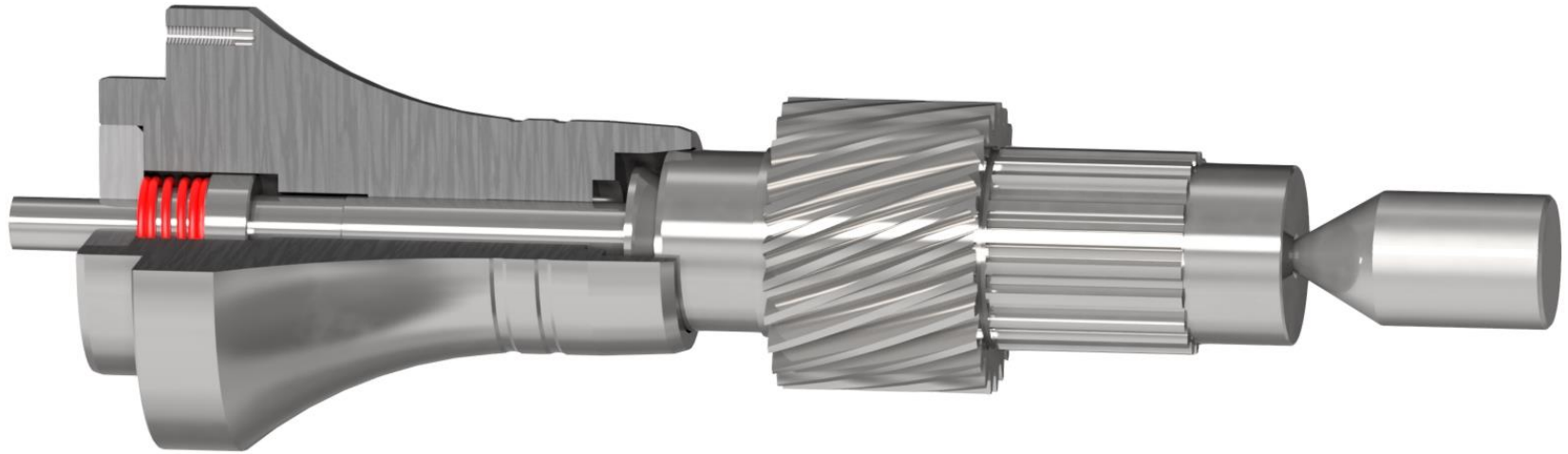


- High concentricity and repeat accuracy of $\leq 0,005$ mm (0,0002")
- Excellent wear resistance
- High rigidity due to plane tightening of the workpiece
- Large loading clearance

APPLICATION EXAMPLES:



“Friction Taper” – with mechanical ejector

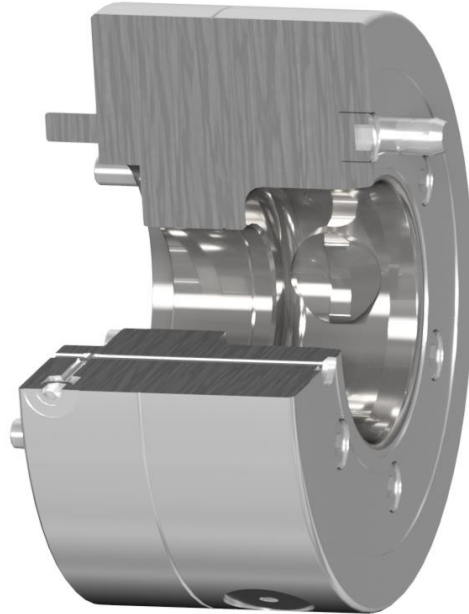


- Very high concentricity and repeat accuracy of $\leq 0,003$ mm (0,00012")
- Excellent wear resistance
- Loading assistance through mechanical ejector
- Low profile body

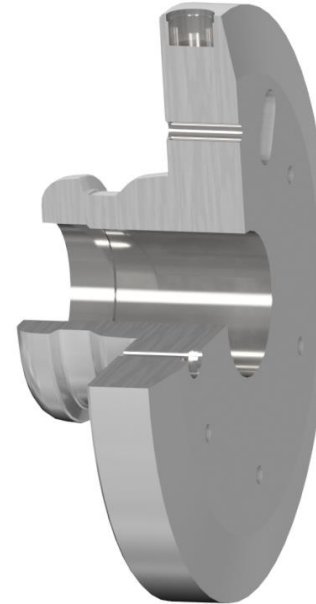
APPLICATION EXAMPLES:



Mechanical Quick Change System



- Very high concentricity and repeat accuracy of $\leq 0,003$ mm (0,00012")
- Permanently clamped

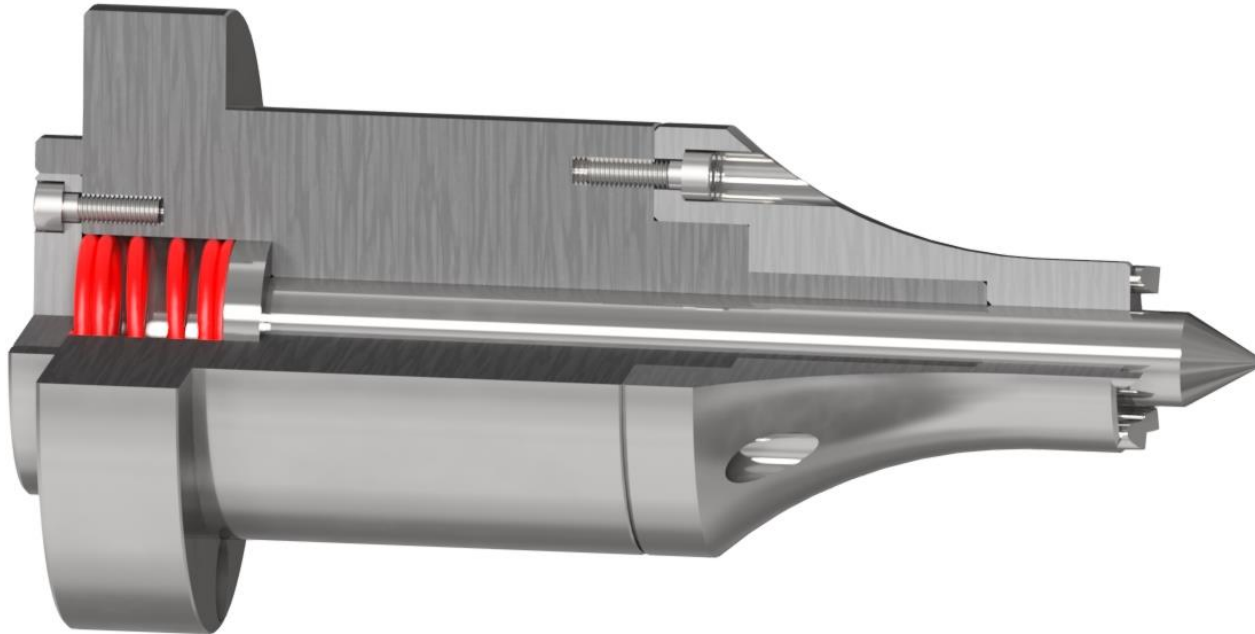


- High rigidity by pull down effect of the changeable clamping tools
- Easy to use

APPLICATION EXAMPLES:



Face Driver



- High concentricity and repeat accuracy of $\leq 0,005$ mm (0,0002")
- Excellent wear resistance
- Changeable face drivers inserts and centers possible
- Low profile body

APPLICATION EXAMPLES:



high **μ**
precision
clamping

www.mytec.de

